

WELCOME

The South Howard Flood Relief Project

City Council Workshop

January 29, 2026



What 5.3" of Rain Really Means:



- **Flooded Homes & Vehicles**
- **Road Closures**
- **Resident Displacement**
- **No Hospital Access**
- **Slowed Emergency Response**
- **Decreased Property Values**
- **Lost Business Revenue**
- **Costly Repairs**

Flooding in Parkland Estates on 8/1/2015 after 5.4" No-name Rain

Estimated Costs

2022 vs. 2026

Est. \$65 million

Est. \$98 million

-The project cost is expected to decrease as the design continues

The project has grown in scale to protect the most families, homes, and businesses possible.

Expanded Route into Palma Ceia Pines

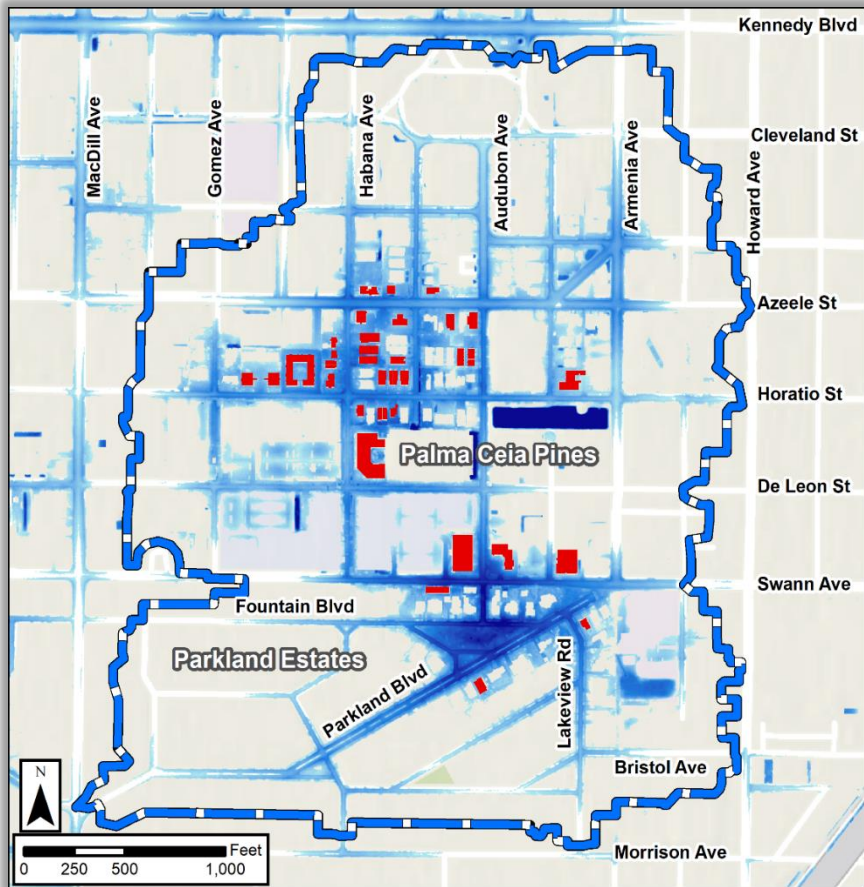


AMI Pond Connection to Palma Ceia Pines



What the Investment Delivers

Current Flooding 5yr / 8hr



Proposed Flood Reduction 5yr / 8hr



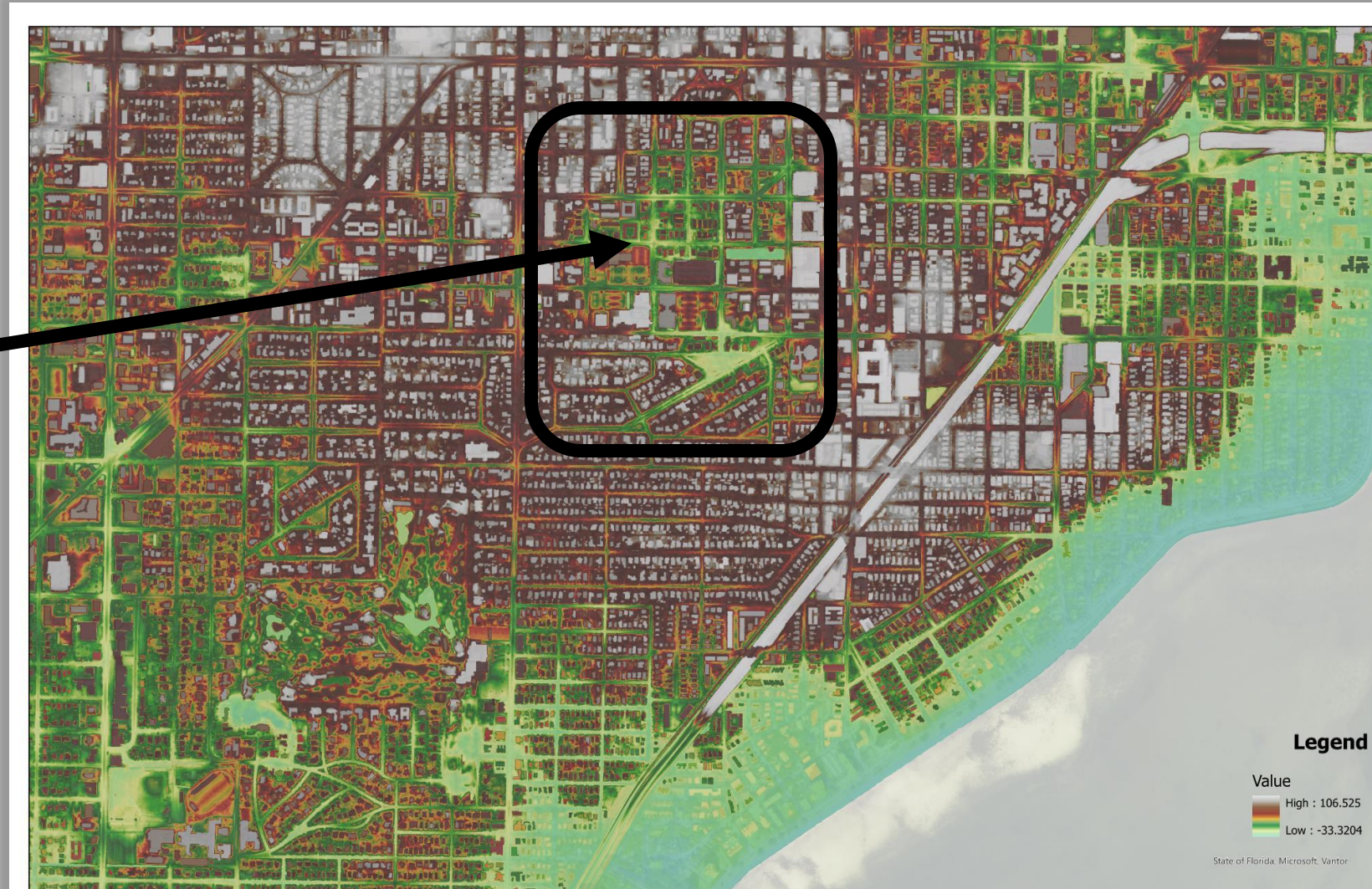
- 95% Flood Reduction
- Significant Improvement in Palma Ceia Pines
- 70% Structural Flood Reduction for a *Milton-type Event* (220+ Homes & Businesses Saved)

70% Less Structural Flooding

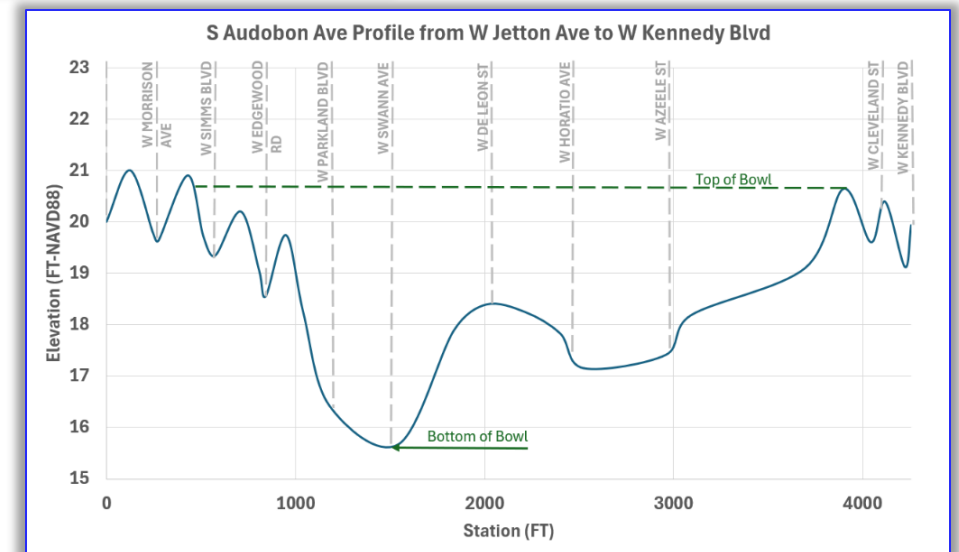
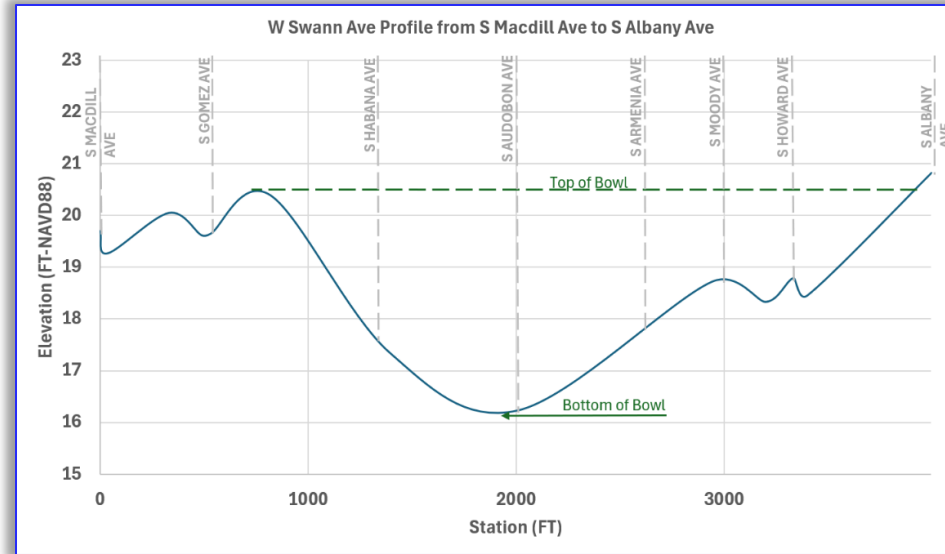
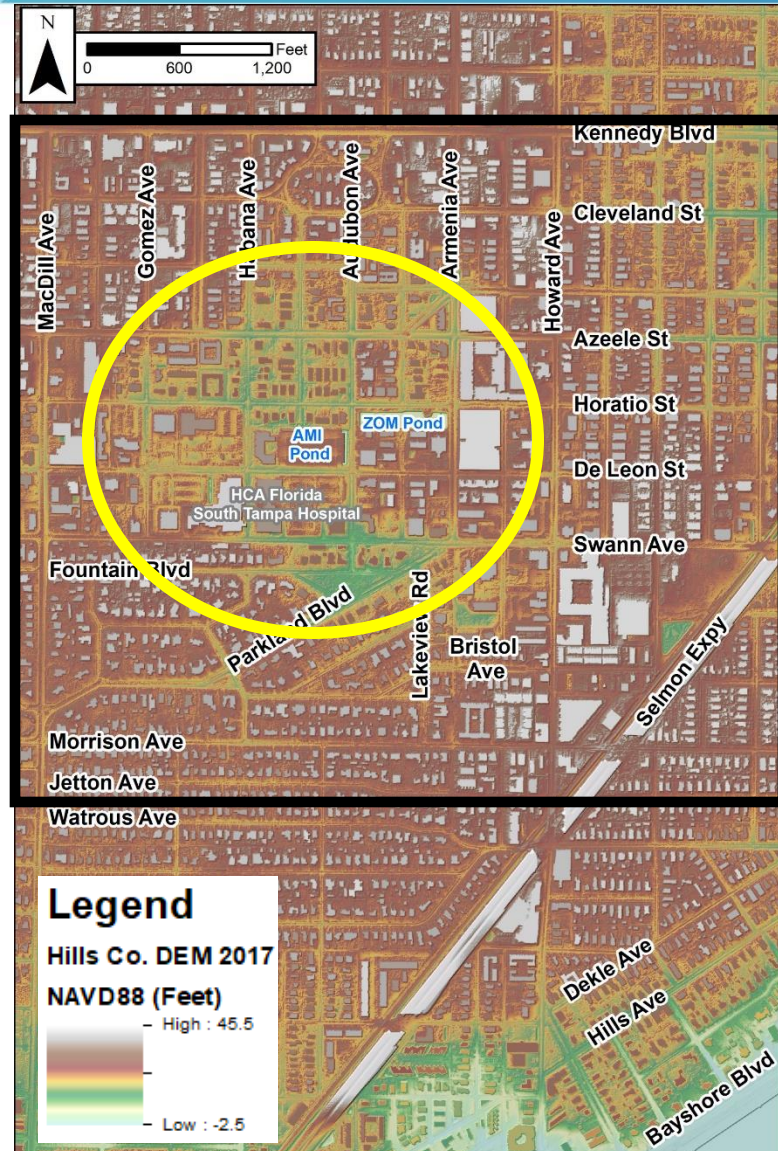


Bowl Shaped Topography

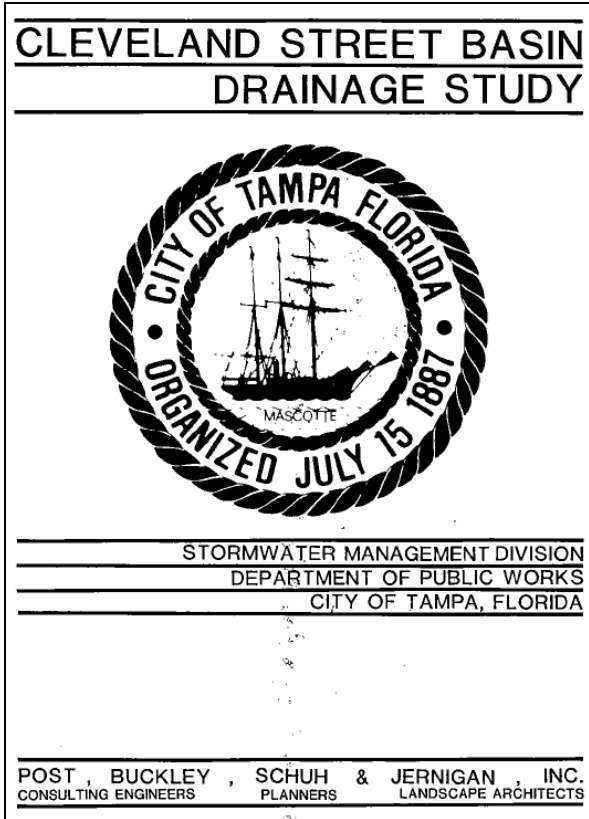
Green = LOW



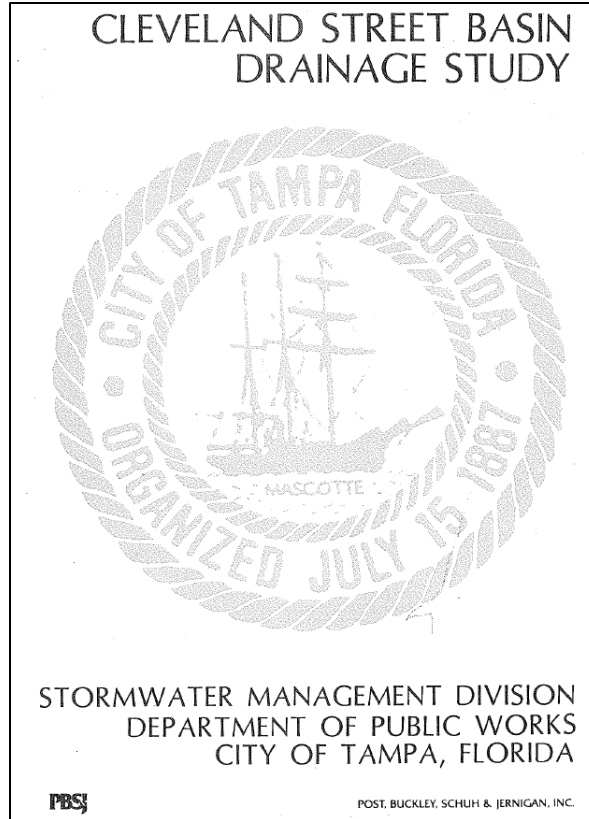
Why Does this Area Flood? (The “Bowl”)



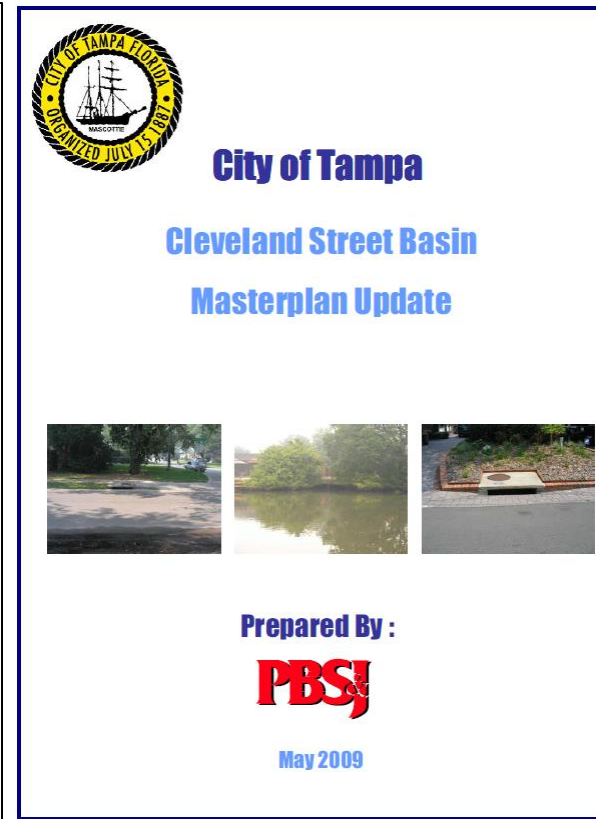
Decades of Studies



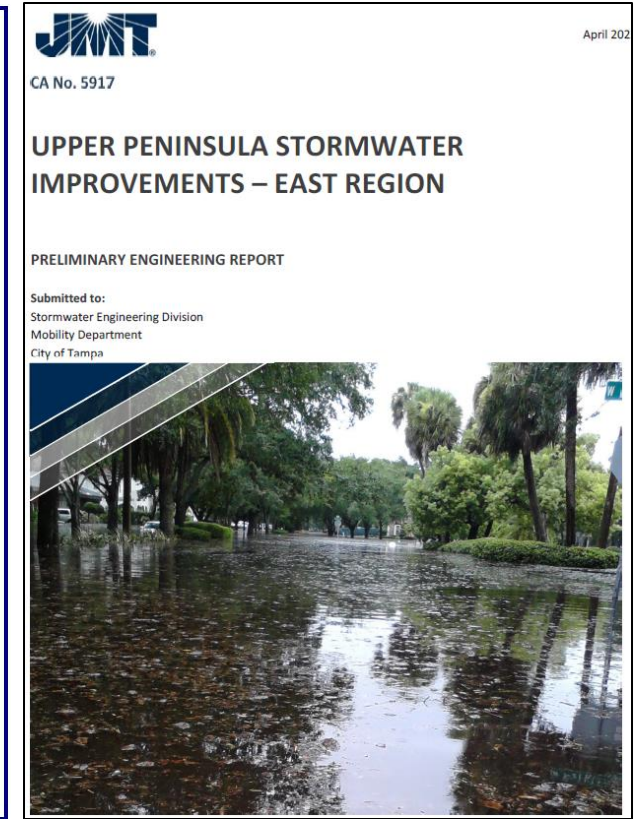
1983 Study by PBS&J



1988 Study by PBS&J

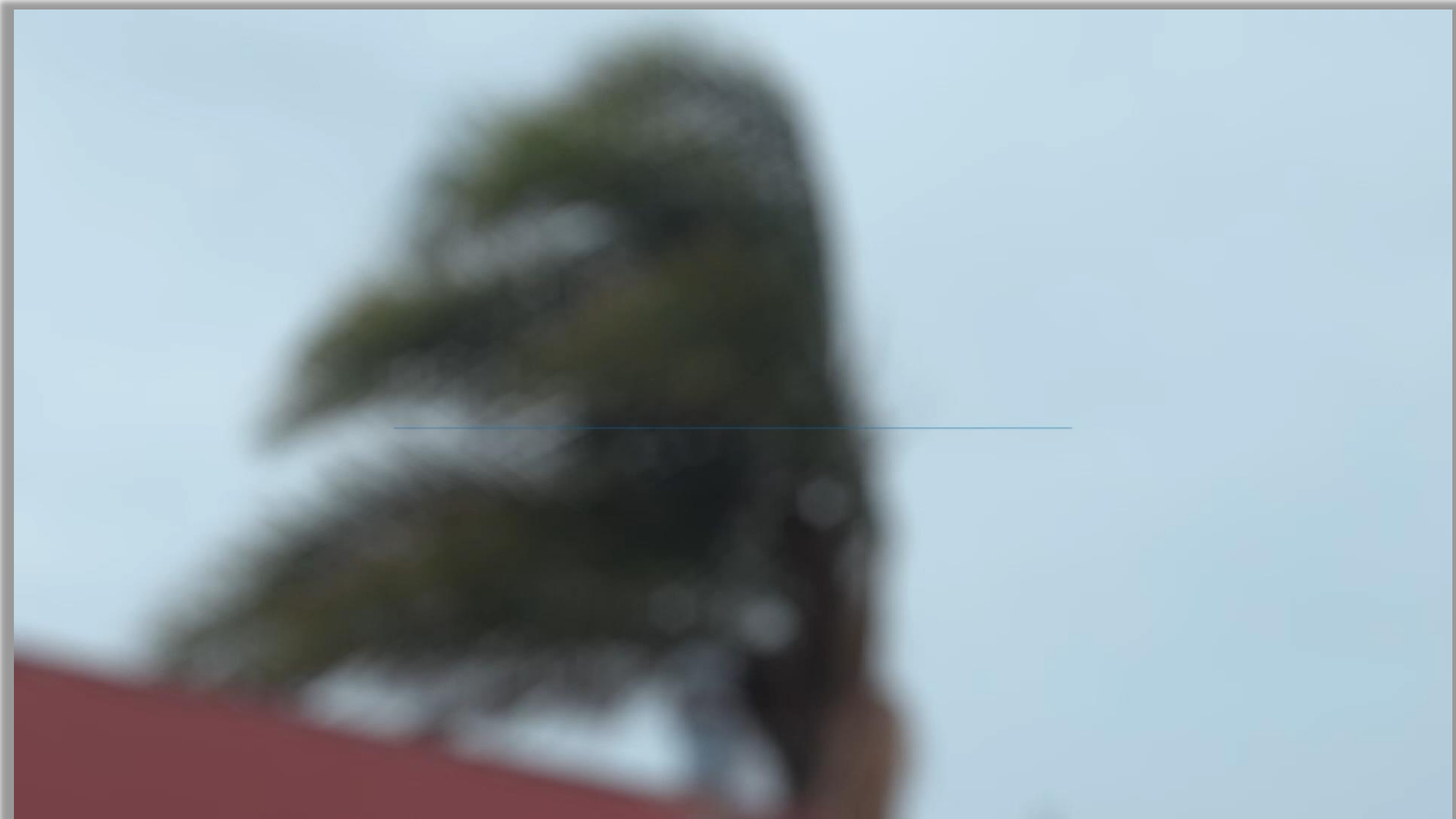


2009 Study by PBS&J



2022 Study by JMT

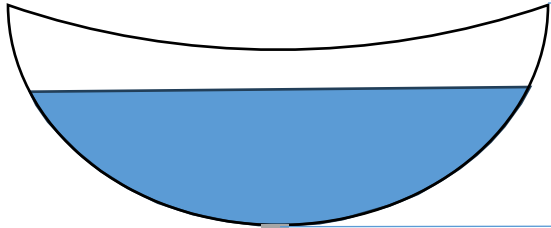
South Howard Project Explained



Why Does this Work

Palma Ceia Pines & Parkland Estates

Elevation ~ 20'



Elevation ~ 15'

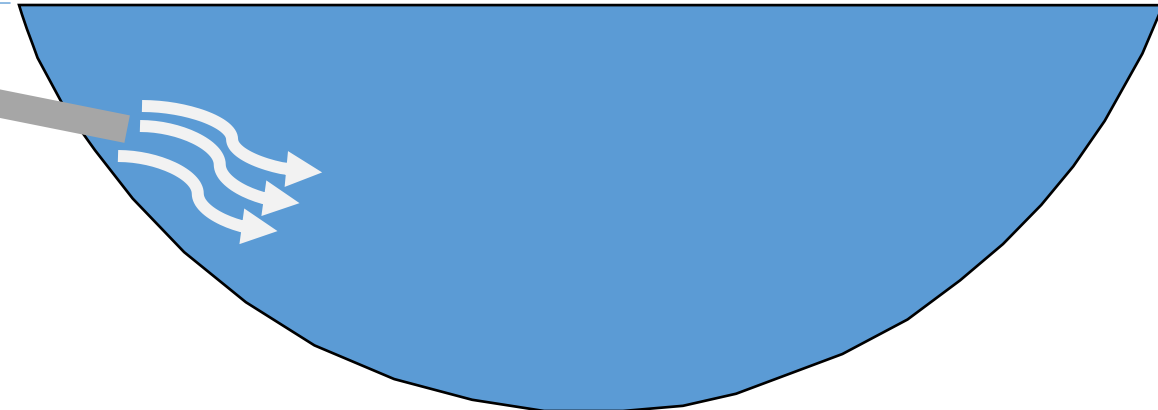
GRAVITY



Elevation ~ 0'

Hillsborough Bay

New Box Culvert



Success Stories

MacDill 48



SE Seminole Heights



SE Seminole Heights



Henderson / Dale Mabry



Manhattan Ave.



Cypress St. Outfall

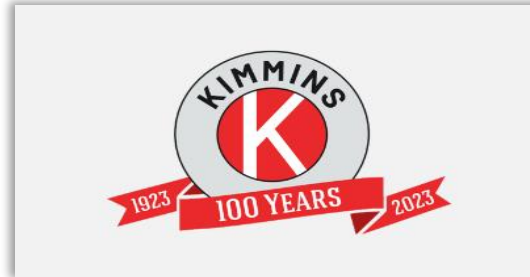


Our Team



Minimizing Impact

- **15-60 Days per Segment Near Business District**
 - **Construction Pause During Business “Busy Season”**
 - **Business Access to Remain**
 - **Restore as You Go**
 - **Sidewalk Kept Open at All Times**
 - **Parking Needs Will Be Addressed**
 - **Work With Business Community on a “Shop Howard” Style Campaign**
- Preliminary Construction Phasing Plan** →
- 
- The logo for Kimmins' 100th anniversary. It features a circular emblem with the word "KIMMINS" in a grey arc at the top and a large red "K" in the center. Below the emblem is a red ribbon banner with the text "100 YEARS" in white. The years "1923" and "2023" are written in white at the ends of the ribbon.



New and Improved South Howard Ave.



New and Improved South Howard Ave.

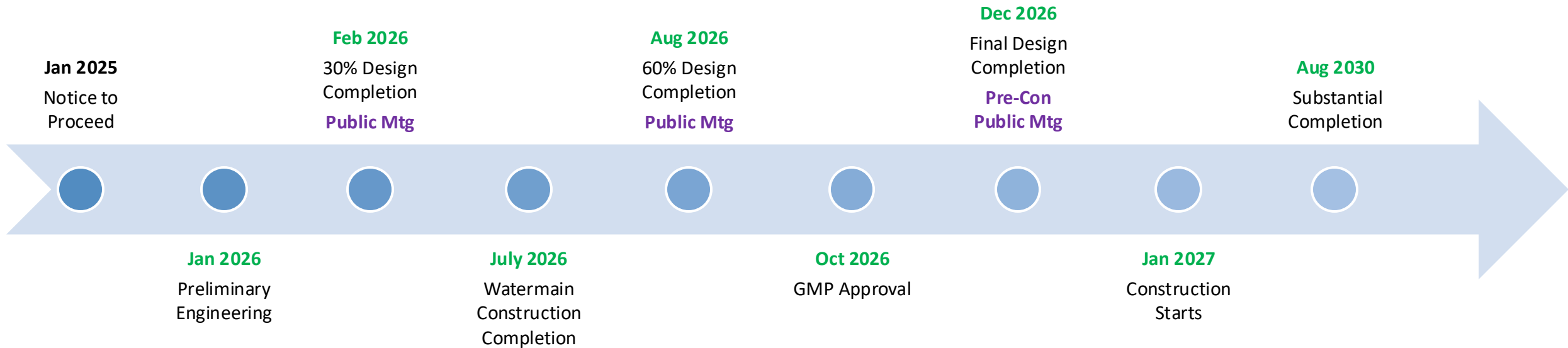


Addressing Concerns:

- Maintenance Alone Will Not Solve This Big of a Problem
- The City and DB Engineers Have Evaluated More Than a Dozen Alternatives.
 - More Expensive, Less Feasible to Build, More Disruptive, Less Effective
- There's NO *Plan B* That Will Deliver This Kind of Flood Relief



Where is the Project Today & Next Steps



Project Team

- Preliminary Engineering Completed
- 30% Design & Public Meeting in Early Spring
- 60% Design & Public Meeting in Late Summer

City Council

- Financial Resolution Approval*
- GMP Approval in Late Summer

**\$20,895,000 Budget Transfer from Completed Lower Peninsula Project*

The South Howard Flood Relief Project:



- **Protects Families**
- **Protects Businesses**
- **Improves Resiliency**
- **Saves on Insurance**
- **Improves Home Values**
- **Reimagined Streetscape**
- **Improved Water Quality**
- **Is Generational**

← This can be a thing of the past

THANK YOU

The South Howard Flood Relief Project

City Council Workshop
January 29, 2026

